

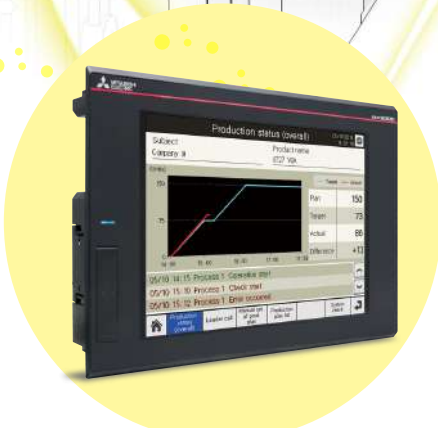
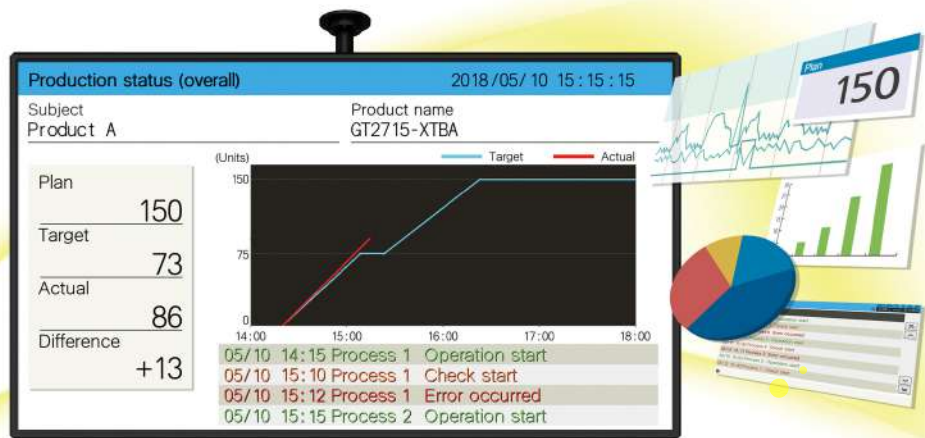


for a greener tomorrow

FA Application Package iQ Monozukuri ANDON



Solving issues of process management and information distribution in the production site
Improve productivity by sharing information between workers!



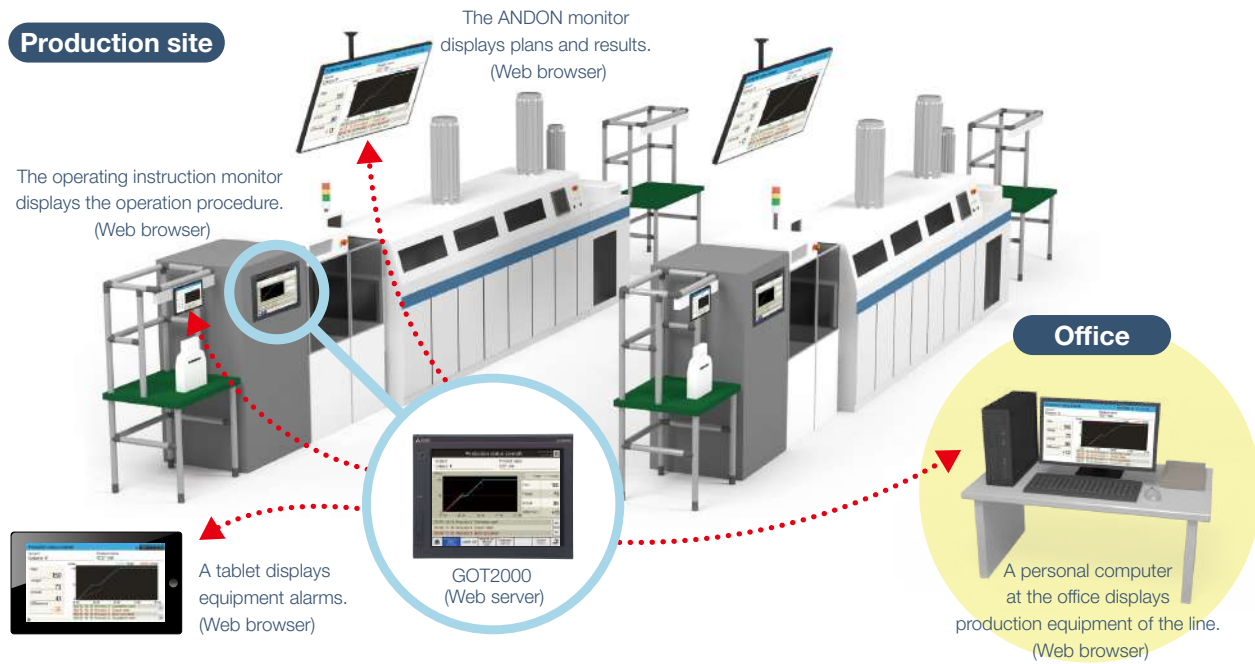
- Display ANDON easily
- Monitor multiple devices with ANDON DB
- Reduce the total system cost



What is iQ Monozukuri ANDON?

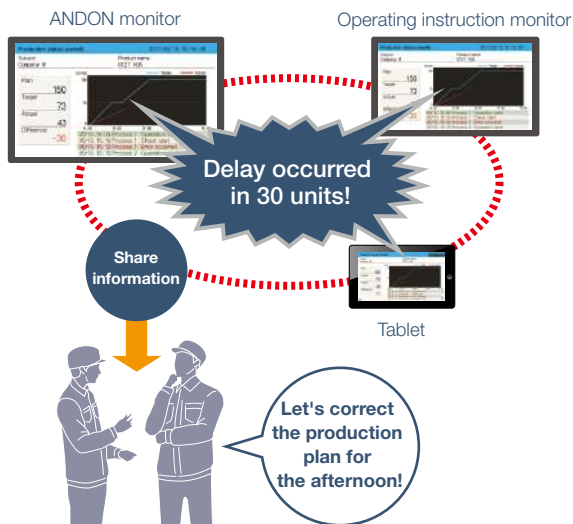
This simple ANDON* package easily enables visualization of production sites using GOT2000 and a general-purpose web browser. Information obtained from production equipment is displayed on the monitor for ANDON via GOT2000, allowing sharing of the production site information to enable visualization.

* ANDON system visualizes information (production status, alarms) that is obtained from production equipment, sharing the information among site workers, a manager, and a maintenance personnel.



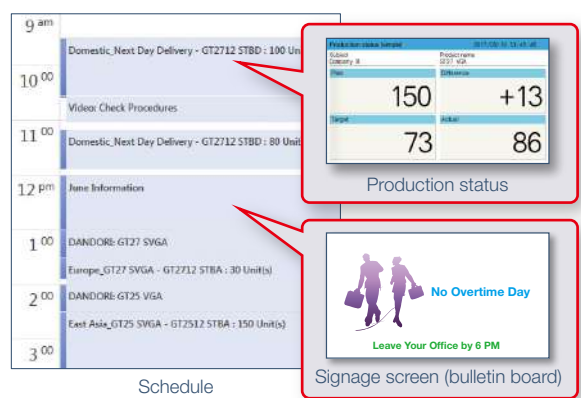
Sharing information to facilitate work

By sharing information among site workers, site manager, and the maintenance personnel at the office, operation processes can be reviewed and corrected smoothly in the event of a problem.



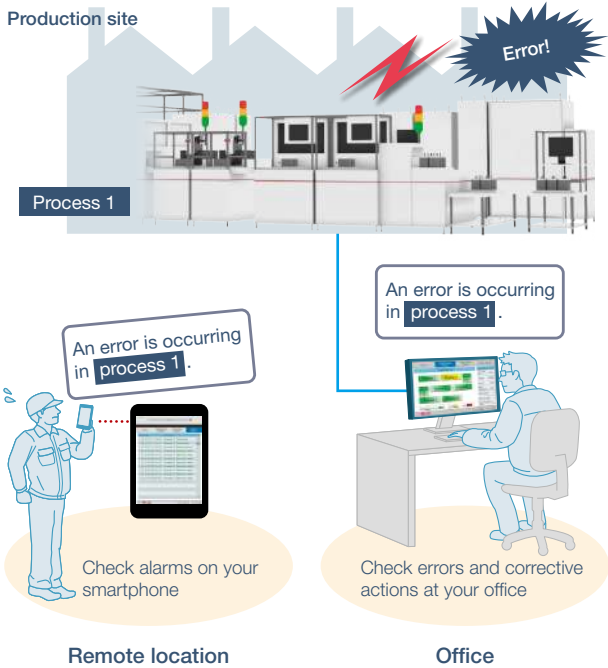
Easily display production plans and bulletin boards without technical knowledge of ANDON

The dedicated setting tool (Contents Publisher) allows you to set/change the display of ANDON screens even without programming knowledge for configuring the ANDON system.



Making remote maintenance easy

The production status and error handling methods can be displayed on an office computer or a tablet in a remote location.



Visualize production with graphical display

The production status of multiple products are displayed in a list and a progress chart. Visualizing the production plan and actual volume per day enables you to catch problems at an early stage.



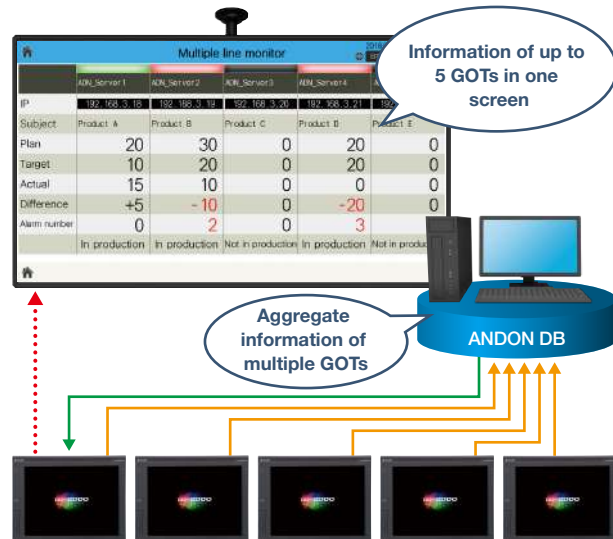
Various screen templates reduce cost for screen design

The screens frequently used at production sites are provided as various templates, such as Production status screen, DANDORI screen, and Uptime status screen. (See page 6)

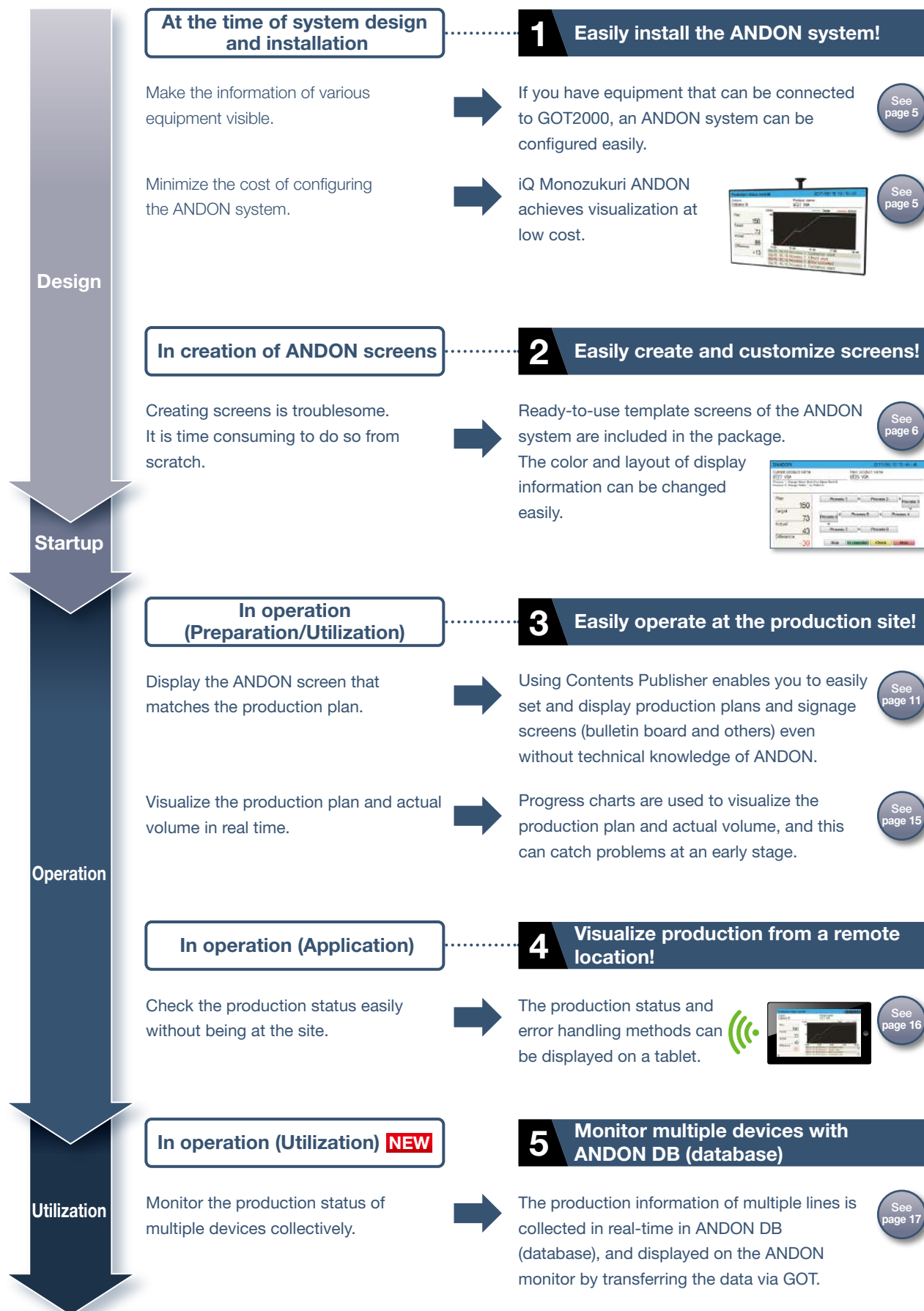


Monitor multiple devices with ANDON DB (database) **NEW**

The production information of multiple lines is collected in real-time in ANDON DB (database), and displayed on the ANDON monitor by transferring the data via GOT.

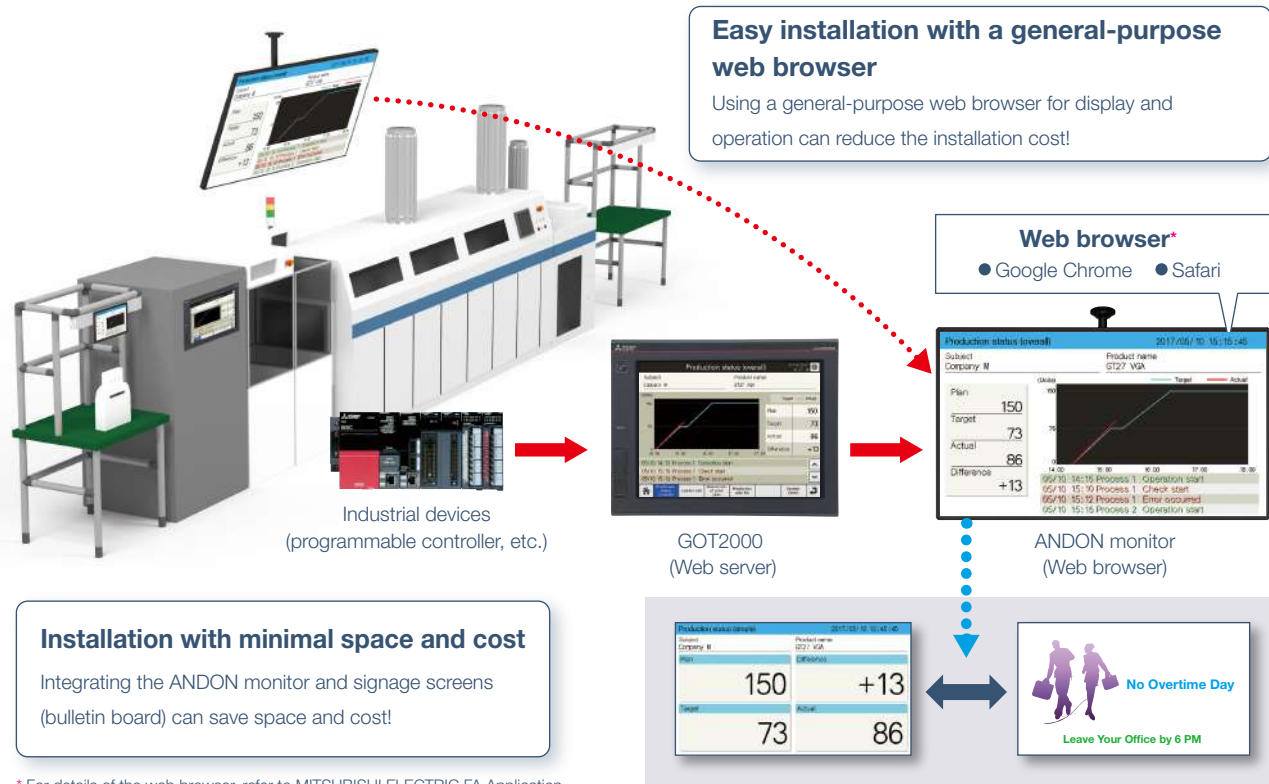


iQ Monozukuri ANDON solves issues at the production site!



1 Easily install the ANDON system!

If you have equipment that can be connected to GOT2000, an ANDON system can be configured easily.



* For details of the web browser, refer to MITSUBISHI ELECTRIC FA Application Package iQ Monozukuri ANDON Operating Manual SH(NA)-081688ENG.

System configuration example <File mode>



* For the system configuration of the DB (database) mode [NEW], please refer to page 18.

*3 Cannot be used with GT2505 or GT25 handy models.

1 Easily install the ANDON system!

2 Easily create and customize screens!

Template screens of the ANDON system are included in the package

Template screen

The screens frequently used at production sites are provided as templates, such as Production status screen, DANDORI* screen, and Uptime status screen. They can be used as screens to operate the on-site GOT (Web server) or as screens for ANDON display. Template screens are easily customized by using the screen design software for GOT (GT Works3).

* DANDORI means replacing a production tool and machine or changing settings when switching products to be produced.

<On site image>

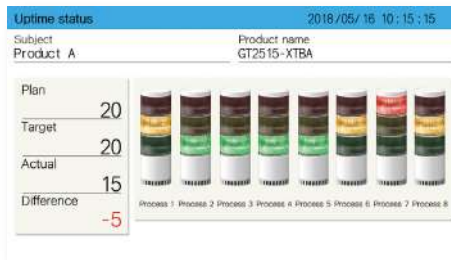


2

Easily create and customize screens!

Uptime status screen **NEW**

This screen shows the uptime status of each production line by three-color indicator lamps. The colors of the lamps change according to the uptime status at the production site so that you can visually check the production status quickly.



Leader call screen/Leader notice screen **NEW**

In this screen, you can call the leaders at the production site through the on-site GOT. The operators can call the leader/maintenance leaders without leaving the production site so that they can take corrective actions quickly and reduce downtime of the equipment.

Leader call screen: GOT (on site)

Leader notice screen: ANDON screen/tablet screen (on site, in the office)

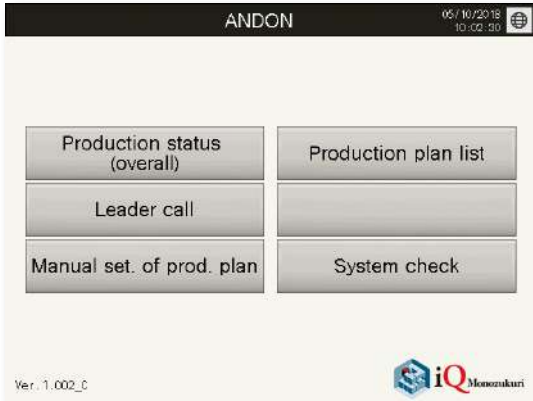


Touch the on-site GOT and call the leader

Notifications are shown on a tablet of the on-site leader or on a personal computer in your office.

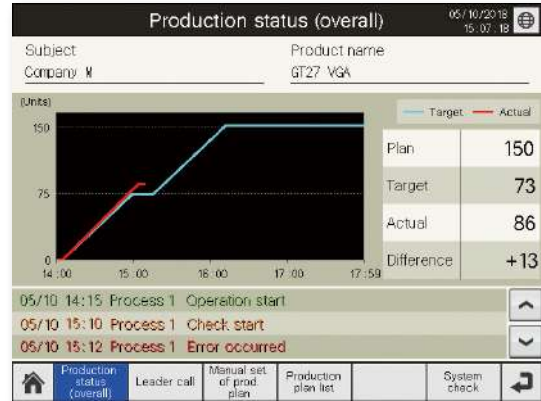
■ Screens for use on on-site GOT (Web server)

Main screen



This screen is used to switch to each screen.

Production status (overall) screen



This screen is used to display the production results in numerical value and as a graph (progress chart). Also, events and alarm occurrence status are listed.

Leader call screen

NEW



From the on-site GOT (Web server), you can call the leader for each process and confirm response conditions on this screen. (See page 6)

Production plan manual settings screen

NEW



This screen is for setting the production plan from the GOT (Web server). You can enter the production plan for each product. (See page 14)

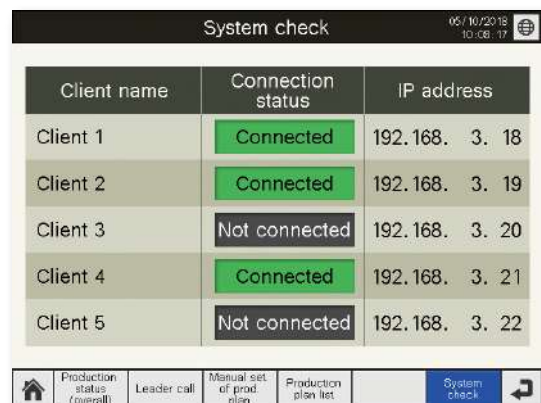
Production plan list screen

NEW



This screen will display the data acquired from Contents Publisher or ANDON DB as a list. Displays the details for production plan name, number of production, actual time and progression rate.

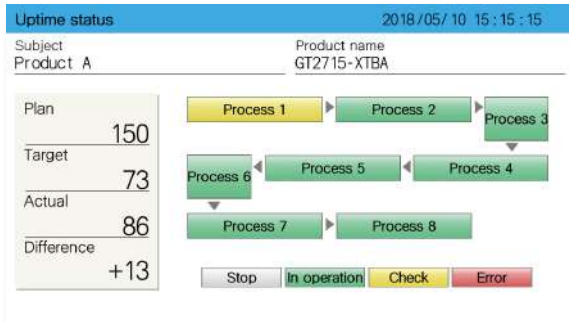
System check screen



This screen is used to check the connection status between the GOT (Web server) and the client (display terminal).

■ Template screens for ANDON

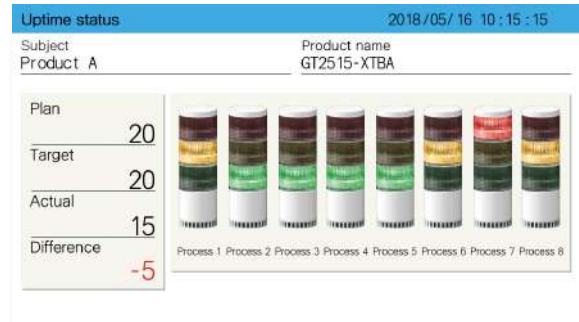
Uptime status screen



This screen displays the production results of the production line in operation in numerical values, and also displays the status of various processes in different colors.

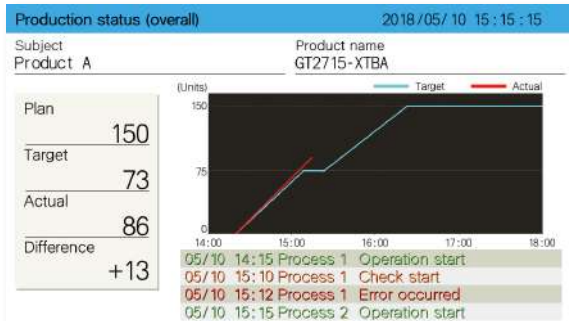
Uptime status screen

NEW



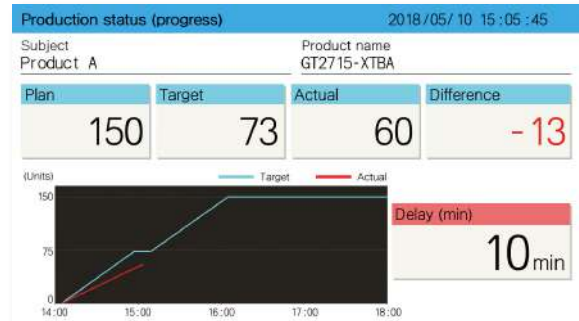
This screen is used to display the uptime status of the production line. Display each process status via the lamp.

Production status (overall) screen



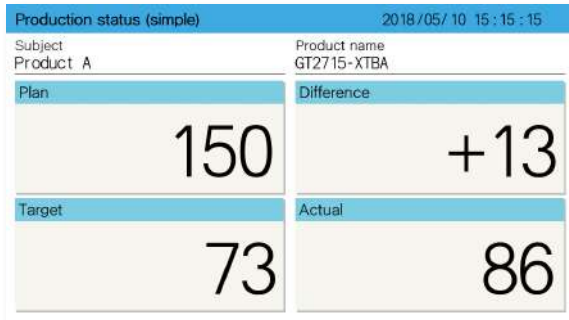
This screen displays the target quantity and production results graphically in a progress chart, which can be used to check progress and production delays. Events and alarm occurrence status can be checked on the same screen. (See page 15)

Production status (progress) screen



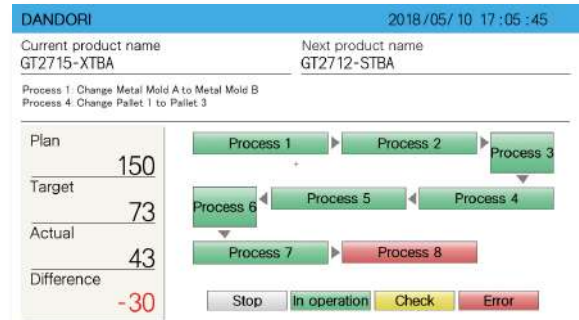
In addition to graphs in progress charts, this screen displays ahead of schedule time or delays in numerical values. Even though the site area is large, the numerical values are displayed large so that they can be seen from a distance.

Production status (simple) screen



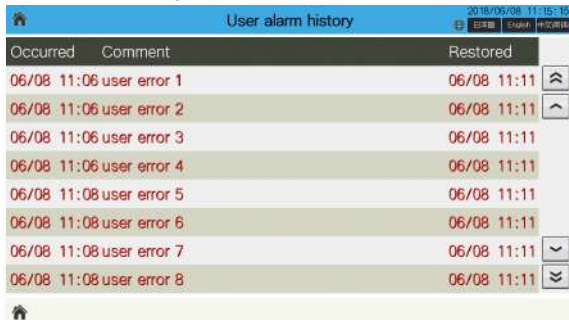
As with the general ANDON screen, this screen displays the production status in numerical values only. Numerical values are enlarged to enhance the visibility of the production status.

DANDORI screen



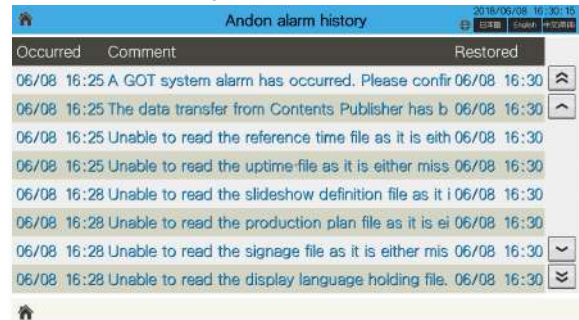
This screen displays messages necessary for DANDORI and the product names before and after DANDORI.

User alarm history screen



This screen is used to display the user alarm history on a client (display terminal). Displays the list of the alarms (such as errors of devices during operation) occurred in the production line.

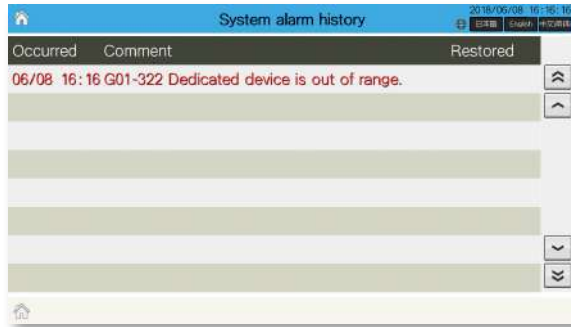
ANDON alarm history screen



This screen is used to display the ANDON alarm history on a client (display terminal). Displays the list of the alarms occurred in the ANDON function.

■ Template screens for ANDON

System alarm history screen



This screen is used to display the system alarm history on a client (display terminal) for the alarms occurred in the GOT (Web server). Displays the list of the system alarms that have occurred in the GOT (Web server).

Leader notice screen

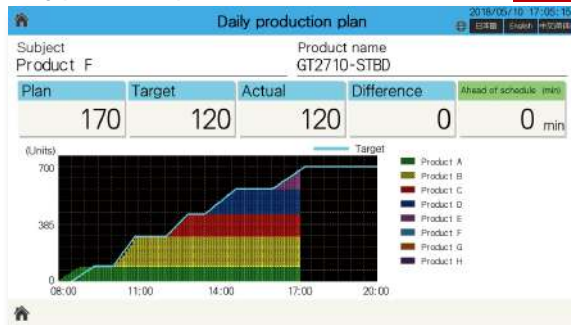
NEW



This screen is used to display the call status of the leader on a client (display terminal). (See page 6)

Daily production plan screen

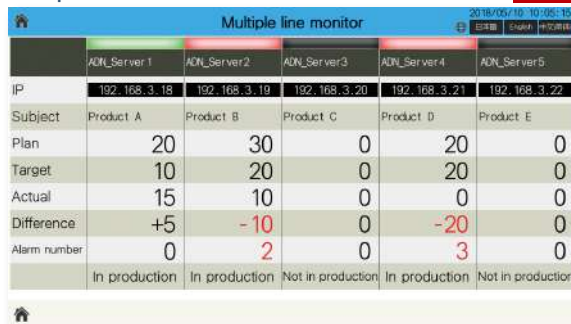
NEW



This screen displays multiple products' production plans and production results as numerical values and in a progress chart. (See page 15)

Multiple line monitor screen

NEW



This screen displays the production status of the GOT (Web server) that is assigned to an IP address from ANDON DB (database). (See page 17)

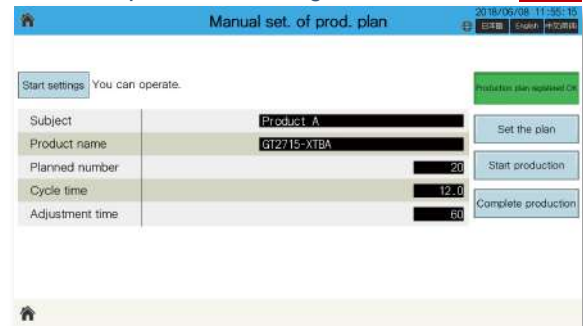
Event history screen



This screen displays a list of the events (such as start and stop operation of the equipment) that occurred in the production line.

Production plan manual settings screen

NEW



Operation screen to manually set the production plan from a client (tablet).

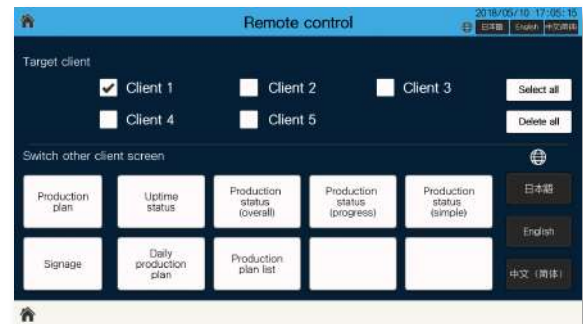
Production plan list screen

NEW



This screen displays the status of that day's production plan. Displays the details for production plan name, number of production, actual time and progression rate. (See page 15)

Remote control screen



This screen is used to switch among other client screens (display terminals) by remote control. Select a client (display terminal) and switch a display screen or a display language. (See page 14)

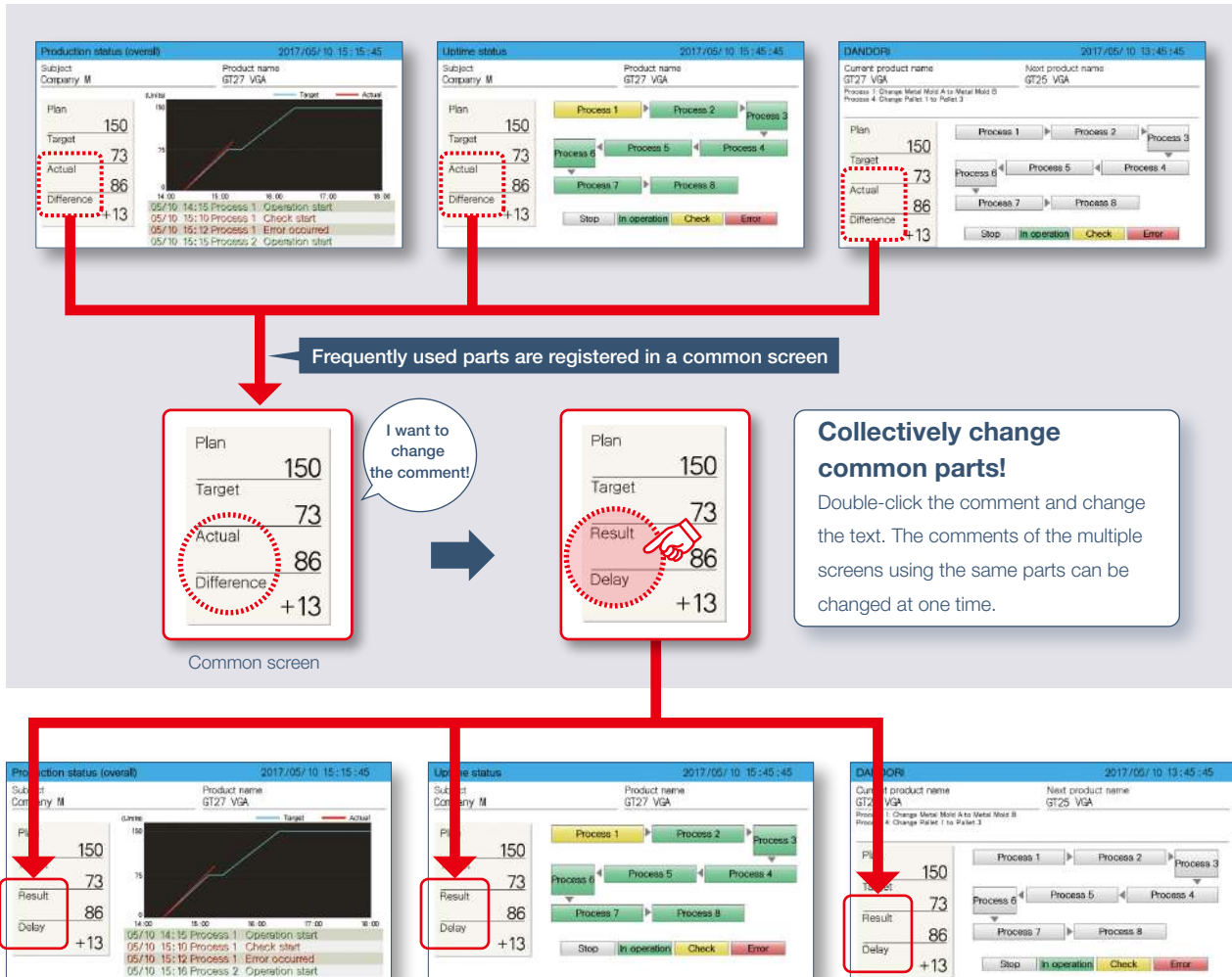
Easily change template screens collectively!

Template screen/GT Works3

In template screens, parts used in multiple screens are registered as common parts so that the displayed information can be changed collectively.

2

Easily create and customize screens!



Easy display setting of signage screens! (bulletin boards and others)

Contents Publisher

By displaying the visitor schedule, notifications, and equipment maintenance notifications on signage screens (bulletin board and others), information can be given timely. Displayed information is set using the Contents Publisher*.



* Contents Publisher is a tool to configure the ANDON system, which easily updates schedules and information on a bulletin board without technical knowledge of programming.

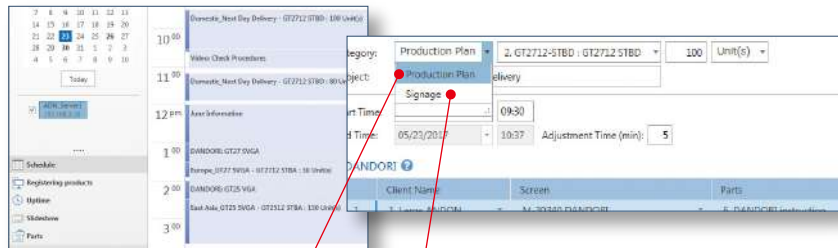
3 Easily operate at the production site!

Using the Contents Publisher, it is possible to set the contents (such as production plan, uptime status, and messages) to be displayed on the ANDON monitor easily.

Setting schedule

You can easily set up the DANDORI instruction screen according to the production plan and the screen you want to display on the signage screen (bulletin board, etc.).

Contents Publisher



Set a display screen that matches the production plan.

Set a bulletin board to be displayed on a signage.



Image of setting schedule and ANDON display

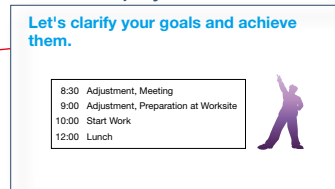
Contents Publisher

According to the schedule settings, the ANDON display is switched in order.

Schedule



ANDON display



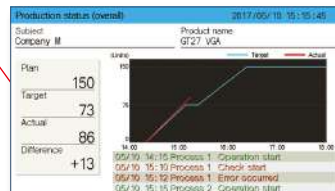
Signage screen

Displays a bulletin board for messages and operating instruction text.



DANDORI screen

Displays the product name and details of DANDORI.



Production status screen

Displays the difference between the target quantity and production result in a graph (progress chart). Also, events and alarm occurrence status are listed.



Slideshow

Displays multiple screens such as a product image and operation procedure video in turn in certain intervals.

How to set Contents Publisher

Contents Publisher

The ANDON screen display can be set and changed using easy settings of Contents Publisher even without programming knowledge for configuring the ANDON system.

Contents Publisher
Quick Start Guide Movie



1) Registering GOT

Register the information of GOT, which is the server that manages ANDON.

GOT registration screen

Project Data
C:\Temp\ANDON\AP30-ADN001AA-GT2708V_1.000A.GTX

GOT Information

GOT Name: ADN_Server_Line5
GOT IP Address: 192.168.3.18
Peripheral S/W Communication Port No.: 5015
Num. of Clients: 5

2) Registering product information

Register the information of a product to be produced.

In addition to directly inputting information to Contents Publisher, you can also export information to an Excel file (.xlsx), edit product information collectively, and then import the data.

Input screen of Contents Publisher

No.	Category	Product Name	Product Type	Product Name	Setup Time (min)	Cycle Time (sec)
1	GOT	GT2712-STBA	GT2712 STBA		10	25
2	GOT	GT2712-STBD	GT2712 STBD		10	25
3	GDT	GT2710-STBA	GT2710 STBA		10	20
4	GDT	GT2710-STBD	GT2710 STBD		10	20
5	GOT	GT2512-STBA	GT2512 STBA		10	20
6	GOT	GT2512-STBD	GT2512 STBD		10	20

Exported Excel file

Exporting information from Contents Publisher

File Format Version: 1.0

No.	Category	Product Name	Product Type	Product Name	Setup Time (min)	Cycle Time (sec)
1	GOT	GT2712-STBA	GT2712 STBA		10	25
2	GOT	GT2712-STBD	GT2712 STBD		10	25
3	GDT	GT2710-STBA	GT2710 STBA		10	20
4	GDT	GT2710-STBD	GT2710 STBD		10	20
5	GOT	GT2512-STBA	GT2512 STBA		10	20
6	GOT	GT2512-STBD	GT2512 STBD		10	20

3) Setting uptime

Set the uptime pattern (working hours, rest period and others) of the production site for a day and for a week.

Uptime pattern for a day

Start Time	End Time
08:30	10:20
10:30	12:00
13:00	14:50
15:00	17:00

Uptime pattern for a week

4) Setting schedule

Set the schedule based on the production plan. The adjustment time can be set because the time required for adjustment work is different between skilled and unskilled workers.

Schedule

Setting schedule

Category: Production Plan
Production Plan: 2, GT2712-STBD - GT2712 STBD
delivery
Signage
Start Time: 09:30
End Time: 05/25/2017 10:37
Adjustment Time (min): 5

Set Adjustment Time (min) [NEW]

5) Transferring schedule

Transfer the set schedule to the GOT and realize ANDON display.

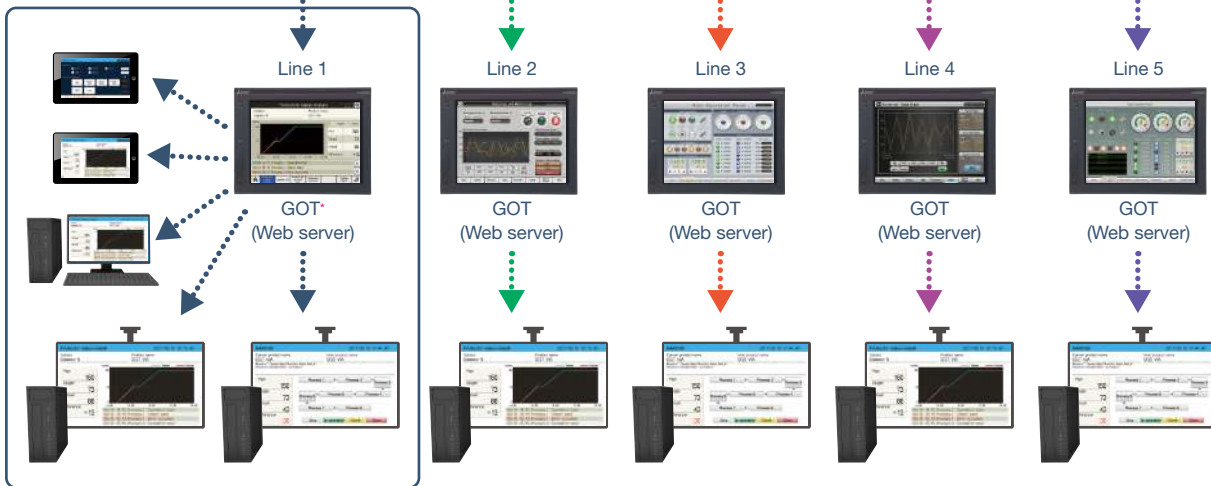
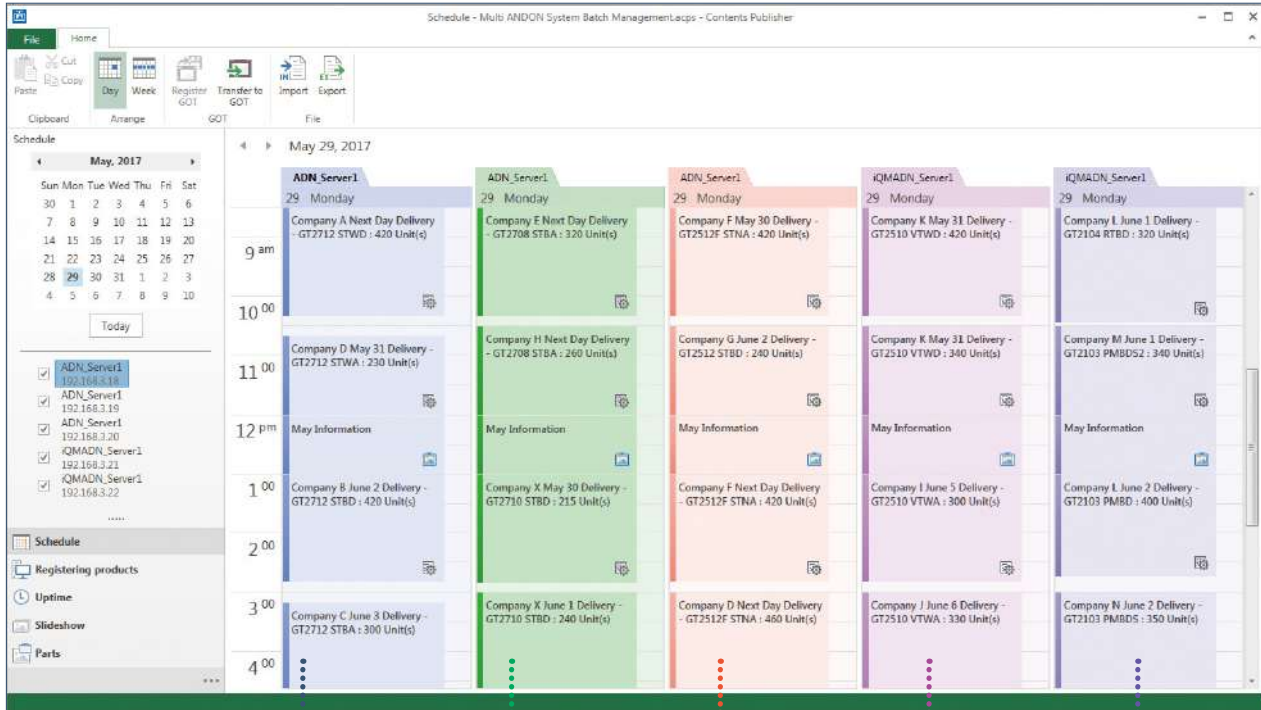


Manage multiple ANDON systems collectively!

Contents Publisher

By registering multiple ANDON GOTs, screens displayed on ANDON can be managed collectively. (Up to five GOTs)

Contents Publisher manages multiple ANDON GOTs that are installed in the same equipment or the same production line so that it is possible to collectively reflect changes of information about production plans and bulletin boards.



* Up to five clients (display terminals) can display ANDON data through one GOT (Web server).

3

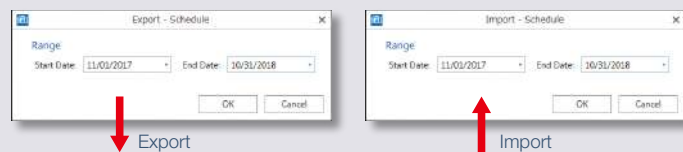
Easily operate at the production site!



Tip!

When you want to change the schedule (production plan or signage screens) collectively, you can export the schedule and collectively change it in Excel.

The target range can be specified by date so that the schedule of an arbitrary period (maximum 1 year) can be changed at a time. **[NEW]**



Exported Excel file

Start Date	Start Time	End Date	End Time	GOT Host	GOT IP	Subject	Category	Product	Plant
2017/11/1	0:15 AM	2017/11/1	5:00 PM	ADN_Server1	192.168.0.18	GT2115-VTDA-December Delivery	Production Plan	1. GT2115-VTDA	15 Unit(s)
2017/11/1	8:15 AM	2017/11/1	6:00 PM	ADN_Server1	192.168.0.18	GT2115-VTGA-December Delivery	Production Plan	2. GT2115-VTGA	15 Unit(s)
2017/11/1	8:15 AM	2017/11/1	6:00 PM	ADN_Server1	192.168.0.18	GT2115-VTGD-December Delivery	Production Plan	3. GT2115-VTGD	15 Unit(s)
2017/11/1	8:15 AM	2017/11/1	6:00 PM	ADN_Server1	192.168.0.18	GT2115-VTGB-December Delivery	Production Plan	4. GT2115-VTGB	15 Unit(s)
2017/11/1	8:15 AM	2017/11/1	6:00 PM	ADN_Server1	192.168.0.18	GT2115-VTGC-December Delivery	Production Plan	5. GT2115-VTGC	15 Unit(s)
2017/11/1	8:15 AM	2017/11/1	6:00 PM	ADN_Server1	192.168.0.18	GT2115-VTGE-December Delivery	Production Plan	6. GT2115-VTGE	15 Unit(s)
2017/11/1	8:15 AM	2017/11/1	6:00 PM	ADN_Server1	192.168.0.18	GT2115-VTFD-December Delivery	Production Plan	7. GT2115-VTFD	15 Unit(s)
2017/11/1	8:15 AM	2017/11/1	6:00 PM	ADN_Server1	192.168.0.18	GT2115-VTFE-December Delivery	Production Plan	8. GT2115-VTFE	15 Unit(s)
2017/11/1	8:15 AM	2017/11/1	6:00 PM	ADN_Server1	192.168.0.18	GT2115-VTFB-December Delivery	Production Plan	9. GT2115-VTFB	15 Unit(s)
2017/11/1	8:15 AM	2017/11/1	6:00 PM	ADN_Server1	192.168.0.18	GT2115-VTFG-December Delivery	Production Plan	10. GT2115-VTFG	15 Unit(s)
2017/11/1	8:15 AM	2017/11/1	6:00 PM	ADN_Server1	192.168.0.18	GT2115-VTFH-December Delivery	Production Plan	11. GT2115-VTFH	15 Unit(s)
2017/11/1	8:15 AM	2017/11/1	6:00 PM	ADN_Server1	192.168.0.18	GT2115-VTFI-December Delivery	Production Plan	12. GT2115-VTFI	15 Unit(s)
2017/11/1	8:15 AM	2017/11/1	6:00 PM	ADN_Server1	192.168.0.18	GT2115-VTFJ-December Delivery	Production Plan	13. GT2115-VTFJ	15 Unit(s)
2017/11/1	8:15 AM	2017/11/1	6:00 PM	ADN_Server1	192.168.0.18	GT2115-VTFK-December Delivery	Production Plan	14. GT2115-VTFK	15 Unit(s)
2017/11/1	8:15 AM	2017/11/1	6:00 PM	ADN_Server1	192.168.0.18	GT2115-VTFL-December Delivery	Production Plan	15. GT2115-VTFL	15 Unit(s)
2017/11/1	8:15 AM	2017/11/1	6:00 PM	ADN_Server1	192.168.0.18	GT2115-VTFM-December Delivery	Production Plan	16. GT2115-VTFM	15 Unit(s)
2017/11/1	8:15 AM	2017/11/1	6:00 PM	ADN_Server1	192.168.0.18	GT2115-VTFN-December Delivery	Production Plan	17. GT2115-VTFN	15 Unit(s)
2017/11/1	8:15 AM	2017/11/1	6:00 PM	ADN_Server1	192.168.0.18	GT2115-VTFO-December Delivery	Production Plan	18. GT2115-VTFO	15 Unit(s)
2017/11/1	8:15 AM	2017/11/1	6:00 PM	ADN_Server1	192.168.0.18	GT2115-VTFP-December Delivery	Production Plan	19. GT2115-VTFP	15 Unit(s)

13

Enter the production plan from the on-site GOT **NEW**

Template screen

On the production plan manual settings screen, the production plan can be entered from the on-site GOT. It can be set per product via a barcode reader or programmable controller devices. Frequently used patterns can also be registered.

Production plan manual settings screen



● Set via a barcode reader or programmable controller devices



or



Barcode reader

Programmable controller

● Set from the barcode reader connected to a tablet (via the GOT Mobile function)



Tablet



Barcode reader

* In addition to the above manual setting methods, the production plan can also be set or changed using Contents Publisher or ANDON DB (database). Note that these methods cannot be used with manual setting methods.

3

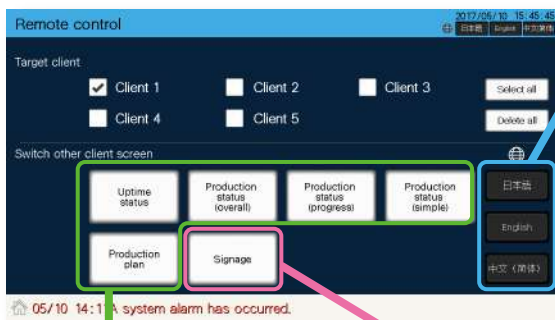
Easily operate at the production site!

Switch ANDON screens by remote control operation from a tablet!

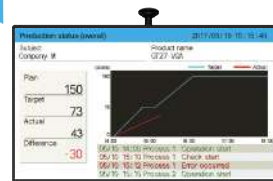
Template screen

The display screen of the specified ANDON monitor and the display language can be switched by using remote control operation.

Remote control screen for tablet



● Language switching



English



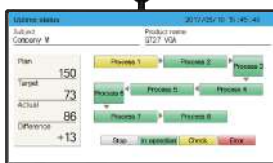
Japanese



Chinese (Simplified)



● Screen switching



Uptime status screen



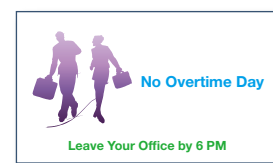
Production status (simple) screen



Production status (progress) screen



● Signage screen switching



Signage screen (image)



Signage screen (bulletin board)

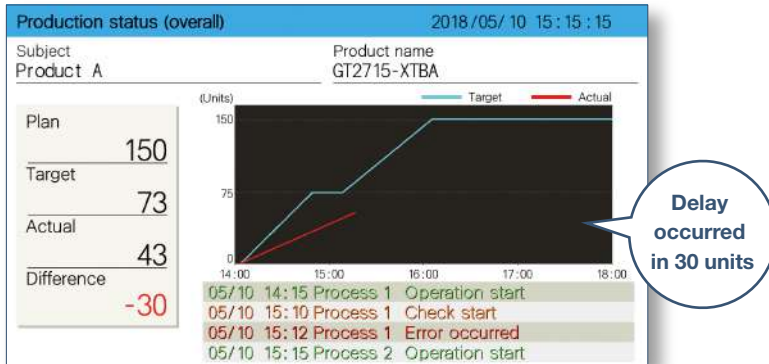


Signage screen (video)



Display production results in numerical values and in a graph (progress chart) Template screen

The production status (overall) screen displays the production quantity planned value, target value, actual value, and the difference between the target and actual values numerically. Also, delays can be detected timely because the difference between the target value and production results can be checked graphically on a progress chart.



Visualizing problems

Production delays against the target and alarm occurrence status can be checked on the progress chart.

Planning measures

This screen is helpful to plan measures such as changing the production plan.

Display the production plans and results of multiple products on one screen NEW Template screen

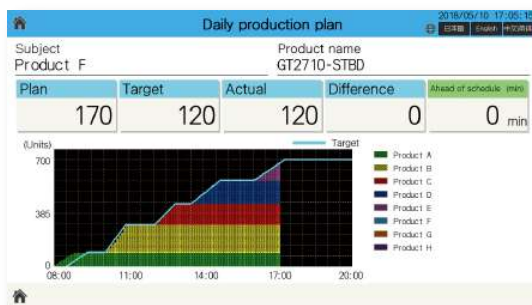
If multiple products are manufactured on one day, the production plans and results of the day can be displayed as one progress chart. On the production plan list screen, the production plans and results of a day can be confirmed on one screen.

Production plan of a day

Subject	Product A	Product B	Product C	Product D	Product E	Product F
Product name	GT2715-XTBA	GT2715-XTBD	GT2712-STBA	GT2712-STBD	GT2710-STBA	GT2710-STBD
Start date	2018/5/10	2018/5/10	2018/5/10	2018/5/10	2018/5/10	2018/5/10
Start time	9:00	11:00	13:00	14:30	16:00	17:00
Number of production	20	20	30	30	20	10
Cycle time (s)	360	360	180	180	180	180



Daily production plan screen



This screen displays multiple products' production plans and production results as numerical values and in a progress chart. The screen shows the information of eight products per day.

Production plan list screen

Subject	Production number	Planned time	Actual time	Progression rate
1 Product A	20	09:00 - 11:00	08:30 - 11:00	100
2 Product B	20	11:00 - 13:00	11:00 - 13:00	100
3 Product C	30	13:00 - 14:30	13:00 - 14:30	100
4 Product D	30	14:30 - 16:00	14:30 - 16:00	100
5 Product E	20	16:00 - 17:00	16:00 - 16:58	100
6 Product F	10	17:00 - 17:30	16:58 - 00:00	10
7 Product G	20	17:30 - 18:30	00:00 - 00:00	0
8 Product H	20	18:30 - 19:00	00:00 - 00:00	0

This screen displays the status of that day's production plan. Displays the details for production plan name, number of production, actual time and progression rate.

4 Visualize production from a remote location!

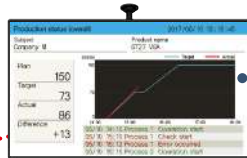
Visualization is realized throughout the production site!

The GOT Mobile function of GOT2000 realizes visualization at production sites and offices. By grasping the occurrence of a problem timely and performing smooth troubleshooting, you can improve the operation rate of equipment and productivity.

Production site

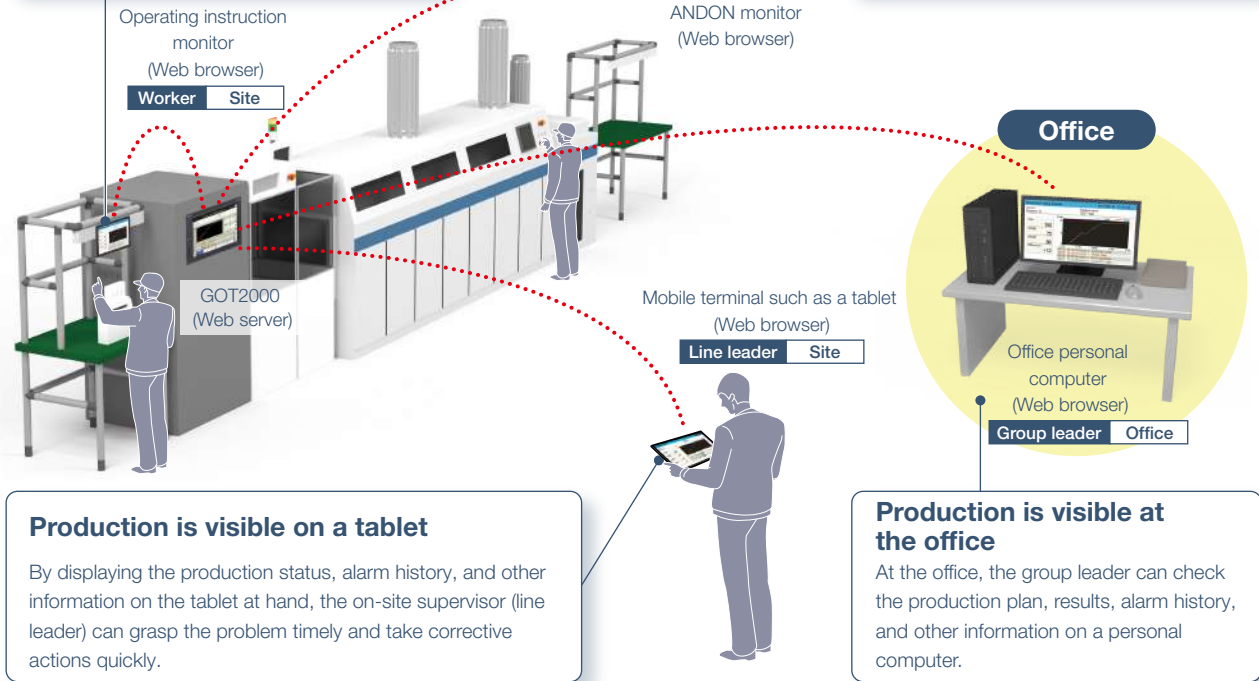
Operating instructions are visible on site
Workers at the production site can check operation procedures on the operating instruction monitor.

Operating instruction monitor
(Web browser)
Worker Site



ANDON monitor
(Web browser)

The production status is visible on site
By displaying the production status on the ANDON monitor at the production site, all workers can share information.



Production is visible on a tablet
By displaying the production status, alarm history, and other information on the tablet at hand, the on-site supervisor (line leader) can grasp the problem timely and take corrective actions quickly.

Mobile terminal such as a tablet
(Web browser)
Line leader Site

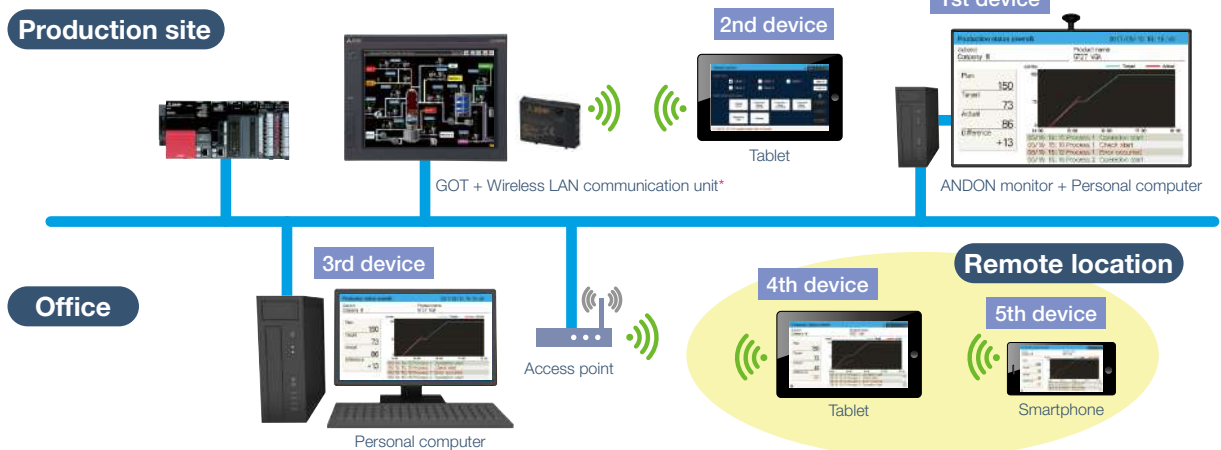
Production is visible at the office
At the office, the group leader can check the production plan, results, alarm history, and other information on a personal computer.

Office
Office personal computer
(Web browser)
Group leader Office

Up to five information devices can simultaneously access one GOT!



With the GOT Mobile function, the status of equipment can be grasped from a remote location using a web browser on a tablet. Since five information devices can access the GOT at the same time and different screens can be displayed and operated respectively, it allows you to work (check/set) efficiently.



Production site

2nd device

1st device

Office

3rd device

Remote location

4th device

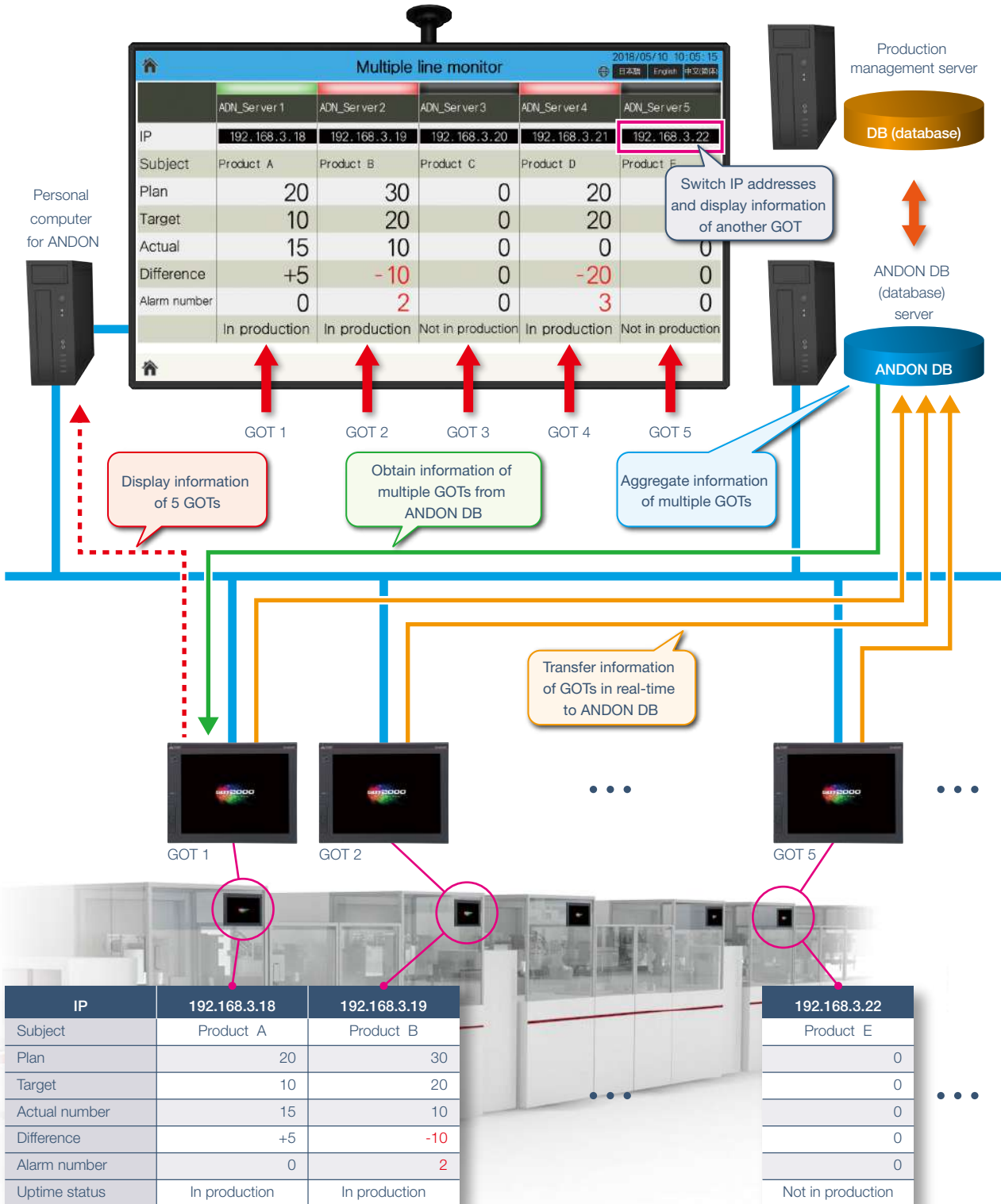
5th device

* Cannot be used with GT2505 or GT25 handy models.

5 Monitor multiple devices with ANDON DB (database) **NEW**

The production information of multiple lines is collected in real-time in ANDON DB (database), and displayed on the ANDON monitor by transferring the data via GOT. By using the stored procedure function of ANDON DB (database), the data can be linked* with the production management server.

* For how to obtain and customize the production information from the production management server, it is recommended to consult with the system designer of the server.



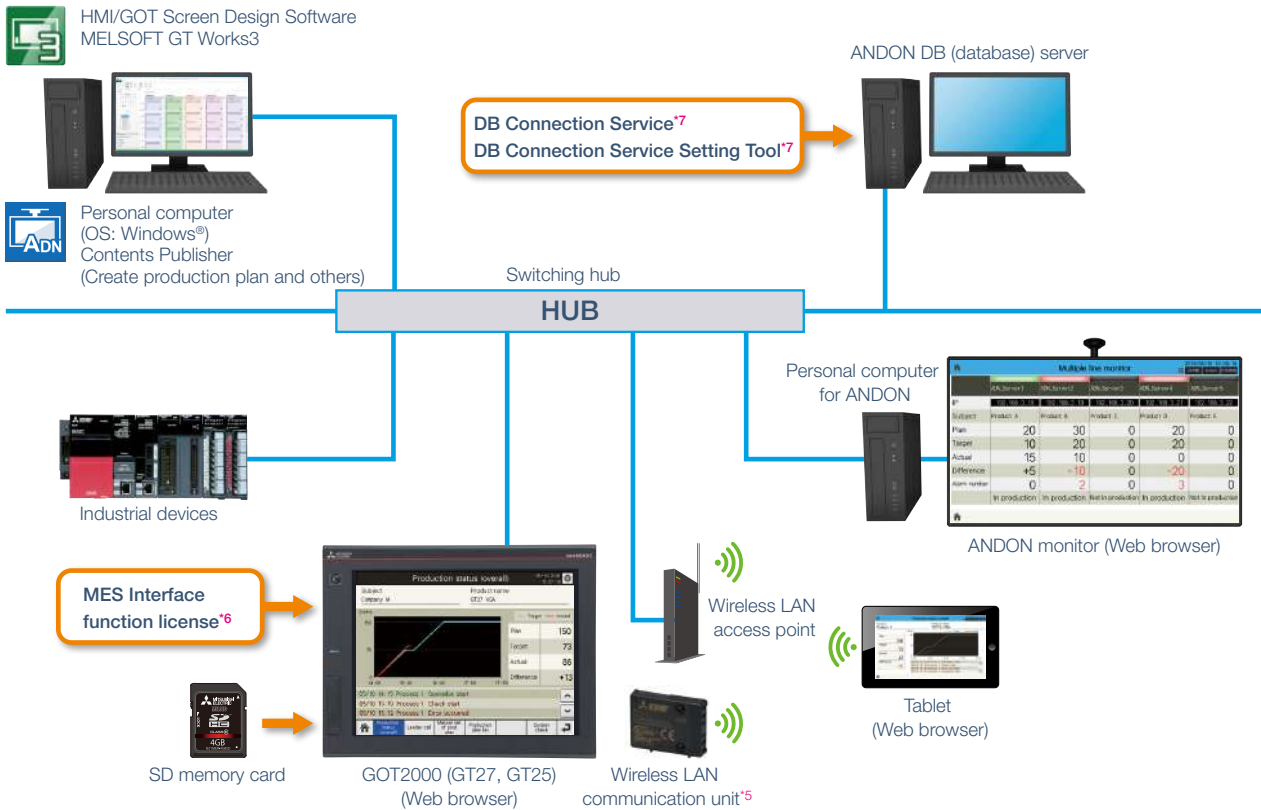
* To use DB (database) mode, iQ Monozukuri ANDON version 1.002C or later and the MES Interface function license are required for each GOT. For the details of the system configuration, please refer to page 18.

System configuration example <DB (database) mode*1 [NEW]>

iQ Monozukuri ANDON*1*2*3

- 1) Contents Publisher
- 2) Project file of the GOT for iQ Monozukuri ANDON (template screens)
- 3) ANDON DB creation tool*4
- 4) GOT Mobile Function License
- 5) License for iQ Monozukuri ANDON

- *1 To use DB (database) mode, iQ Monozukuri ANDON version 1.002C or later is required.
- *2 Used by transferring to a personal computer, GOT2000 or an SD memory card.
- *3 1 license is required for 1 GOT unit.
- *4 Included with iQ Monozukuri ANDON version 1.002C or later.



Items required for using DB (database) mode

- 1) ANDON DB (database) server
- 2) MES Interface function license*6
- 3) DB Connection Service*7
- 4) DB Connection Service Setting Tool*7

- *5 Cannot be used with GT2505 or GT25 handy models.
- *6 1 license is required for 1 GOT unit.
- *7 DB Connection Service and DB Connection Service Setting Tool can be installed from MES DB Connection Service (for GT Works3) that is included in HMI/GOT Screen Design Software MELSOFT GT Works3.

Operating environment of ANDON DB (database) server

Item	Description	
Personal computer	Microsoft® SQL Server® Personal computer to operate 2016 Service Pack 1 Express With Advanced Services (64-bit version only)	
	CPU	Intel® Core™ 4 Core, 2 GHz or more recommended
	Required memory	4 GB or more
Hard disk space	20 GB or more	
OS (64-bit) (English version, Simplified Chinese version, Japanese version)	Microsoft® SQL Server® OS that supports 2016 Service Pack 1 Express With Advanced Services	

Product list

● Application packages

Product name	Model	Description
iQ Monozukuri ANDON*1	AP30-ADN001AA-MA	1 license
	AP30-ADN001AA-MB	5 licenses
	AP30-ADN001AA-MC	10 licenses
	AP30-ADN001AA-MD	15 licenses
	AP30-ADN001AA-ME	20 licenses

*1 Contents Publisher, project file of the GOT for iQ Monozukuri ANDON, GOT Mobile function license, and the iQ Monozukuri ANDON license are included.

● Equipment necessary for system configuration: Products prepared by users

GOT: Any one of the following is required.

Product name	Model	Screen size	
GT27	GT2715	15" XGA	
	GT2712	GT2712-STBA	12.1" SVGA
		GT2712-STBD	
		GT2712-STWA	
		GT2712-STWD*1	
	GT2710	GT2710-STBA	10.4" SVGA
		GT2710-STBD	
		GT2710-VTBA	
		GT2710-VTBD	
	GT2708	GT2710-VTWA	10.4" VGA
		GT2710-VTWD*1	
		GT2708-STBA	
		GT2708-STBD	
	GT2705	GT2708-VTBA	8.4" SVGA
		GT2708-VTBD	
GT2708-VTWA			
GT2708-VTBD			
GT25	GT2705	5.7" VGA	
	GT2512	GT2512-STBA	12.1" SVGA
		GT2512-STBD	
		GT2512F-STNA	
		GT2512F-STND	
	GT2510	GT2510-VTBA	10.4" VGA
		GT2510-VTBD	
		GT2510-VTWA	
		GT2510-VTWD*1	
		GT2510F-VTNA	
		GT2510F-VTND	
	GT2508	GT2508-VTBA	8.4" VGA
		GT2508-VTBD	
		GT2508-VTWA	
		GT2508-VTWD*1	
GT2508F-VTNA			
GT2505	GT2508F-VTND	5.7" VGA	
	GT2505-VTBD		
GT25 (Wide screen)	GT2510	10.1" WXGA	
	GT2510		
	GT2510-WXTSD		
GT2507	GT2507-WTBD	7" WVGA	
	GT2507-WTSD		
GT25 (Rugged)	GT2507T	7" WVGA	
GT25 (Handy)	GT2506HS	6.5" VGA	
	GT2505HS	5.7" VGA	

*1 To conform to ATEX and KCs standards, options (protective seat and special fitting) are required separately. Communication units and option units cannot be used. For the details, please refer to the Technical Bulletin "GOT2000 Series in Compliance with the ATEX Directive and KCs Certification Requirements" No. GOT-A-0101.

Software: Any one of the following is required.

Product name	Model
HMI/GOT Screen	SW1DND-GTWK3-E (English version, standard license product)
Design Software	SW1DND-GTWK3-EA (English version, volume license product*1*3)
MELSOFT GT Works3	SW1DND-GTWK3-EAZ (English version, additional license product*1*2)

*1 The desired number of licenses (2 or more) can be purchased. For details, please contact your local sales office.

*2 This product does not include the DVD-ROM. Only the license certificate with the product ID number is issued.

*3 Volume license product is not sold separately and should be purchased with the standard license product.

Memory card: Any one of the following is required.

Product name	Model	Specifications
SD memory card	NZ1MEM-2GBSD	SD memory card for the GOT, 2 GB
	NZ1MEM-4GBSD	SDHC memory card for the GOT, 4 GB
	NZ1MEM-8GBSD	SDHC memory card for the GOT, 8 GB
	NZ1MEM-16GBSD	SDHC memory card for the GOT, 16 GB

Other options: Prepared as needed

Product name	Model
Wireless LAN communication unit*1*6	GT25-WLAN
Ethernet communication unit*2*3*6*7	GT25-J71E71-100
External I/O unit*3*6*7	GT15-DIOR*4
	GT15-DIO*5

*1 Data transfer in the wireless LAN communication may not be as stable as that in the cable communication because a packet loss may occur depending on the surrounding environment and installation location. Make sure to check operation before using the product. Available countries vary depending on the hardware version. For the details, please refer to GOT2000 Series Wireless LAN Communication Unit User's Manual IB(NA)-0800522.

*2 GT25 wide screen models and GT2507T have two built-in Ethernet ports so that the unit is not required.

*3 Cannot be used with GT25 wide screen models.

*4 GT15-DIOR is a negative common input/source type output.

*5 GT15-DIO is a positive common input/sync type output.

*6 Cannot be used with GT2505 or GT25 handy models.

*7 Cannot be used with GT2507T.

License: Required to use DB (database) mode*1

Product name	Model	Description
MES Interface function license*2	GT25-MESIFKEY-1	1 license
	GT25-MESIFKEY-5	5 licenses
	GT25-MESIFKEY-10	10 licenses
	GT25-MESIFKEY-20	20 licenses

*1 To use DB (database) mode, iQ Monozukuri ANDON version 1.002C or later is required.

*2 1 license is required for 1 GOT unit.

⚠ Precautions for safe use

To use the products given in this publication properly, always read the relevant manuals before beginning operation.

Trademarks and registered trademarks

All product and company names used herein are either trademarks or registered trademarks of their respective owners.

The actual color may differ slightly from the pictures in this catalog.
The actual display may differ from what are shown on GOT screen images.

Global Partner. Local Friend.

American Offices

USA Mitsubishi Electric Automation, Inc. 500 Corporate Woods Parkway, Vernon Hills, IL 60061, U.S.A. Tel: +1-847-478-2100	Mexico Mitsubishi Electric Automation, Inc. Mexico Branch Mariano Escobedo #69, Col. Zona Industrial, Tlalnepantla Edo. Mexico, C.P.54030 Tel: +52-55-3067-7511	Brazil Mitsubishi Electric do Brasil Comercio e Servicos Ltda. Avenida Adelino Cardana, 293, 21 andar, Bethaville, Barueri SP, Brasil CEP 06401-147 Tel: +55-11-4689-3000
--	---	---

Asia-Pacific Offices

China Mitsubishi Electric Automation (China) Ltd. No.1386 Hongqiao Road, Mitsubishi Electric Automation Center, Shanghai, China Tel: +86-21-2322-3030	Taiwan SETSUYO ENTERPRISE CO., LTD. 6F, No.105, Wugong 3rd Road, Wugu District, New Taipei City 24889, Taiwan Tel: +886-2-2299-2499	Korea Mitsubishi Electric Automation Korea Co., Ltd. 7F-9F, Gangseo Hangang Xi-tower A, 401, Yangcheon-ro, Gangseo-Gu, Seoul 07528, Korea Tel: +82-2-3660-9530
Singapore Mitsubishi Electric Asia Pte. Ltd. 307 Alexandra Road, Mitsubishi Electric Building, Singapore 159943 Tel: +65-6473-2308	Thailand Mitsubishi Electric Factory Automation (Thailand) Co., Ltd. 12th Floor, SV.City Building, Office Tower 1, No. 896/19 and 20 Rama 3 Road, Kwaeng Bangpongpan, Khet Yannawa, Bangkok 10120, Thailand Tel: +66-2682-6522 to 31	Indonesia PT. Mitsubishi Electric Indonesia Gedung Jaya 11th Floor, J.L. MH. Thamrin No.12, Jakarta Pusat 10340, Indonesia Tel: +62-21-3192-6461
Vietnam Mitsubishi Electric Vietnam Co., LTD. Ho Chi Minh Head Office Unit 01-04, 10th Floor, Vincom Center, 72 Le Thanh Ton Street, District 1, Ho Chi Minh City, Vietnam Tel: +84-8-3910-5945	India Mitsubishi Electric India Pvt. Ltd. Pune Branch Emerald House, EL -3, J Block, M.I.D.C., Bhosari, Pune - 411026, Maharashtra, India Tel: +91-20-2710-2000	Australia Mitsubishi Electric Australia Pty. Ltd. 348 Victoria Road, P.O. Box 11, Rydalmere, N.S.W. 2116, Australia Tel: +61-2-9684-7777

European Offices

Germany Mitsubishi Electric Europe B.V. German Branch Mitsubishi-Electric-Platz 1, 40882 Ratingen, Germany Tel: +49-2102-486-0	UK Mitsubishi Electric Europe B.V. UK Branch Travellers Lane, Hatfield, Hertfordshire, AL10 8XB, U.K. Tel: +44-1707-28-8780	Italy Mitsubishi Electric Europe B.V. Italian Branch Centro Direzionale Colleoni - Palazzo Sirio, Viale Colleoni 7, Agrate Brianza (MB), Italy Tel: +39-039-60531
Spain Mitsubishi Electric Europe B.V. Spanish Branch Carretera de Rubi 76-80-Apdo.420, 08190 Sant Cugat del Valles (Barcelona), Spain Tel: +34-935-65-3131	France Mitsubishi Electric Europe B.V. French Branch 25, Boulevard des Bouvets, 92741 Nanterre Cedex, France Tel: +33-1-55-68-55-68	Czech Mitsubishi Electric Europe B.V. Czech Branch Avenir Business Park, Radlicka 751/113e, 158 00 Praha 5, Czech Republic Tel: +420-251-551-470
Turkey Mitsubishi Electric Turkey A.S. Umranıye Branch Serifali Mahallesi Nutuk Sokak No:5, TR-34775 Umranıye / Istanbul, Turkey Tel: +90-216-526-3990	Poland Mitsubishi Electric Europe B.V. Polish Branch ul. Krakowska 50, 32-083 Balice, Poland Tel: +48-12-347-65-00	Russia Mitsubishi Electric (Russia) LLC St. Petersburg Branch Piskarevsky pr. 2, bld 2, lit "Sch", BC "Benua", office 720; RU-195027 St. Petersburg, Russia Tel: +7-812-633-3497
South Africa Adroit Technologies 20 Waterford Office Park, 189 Witkoppen Road, Fourways, Johannesburg, South Africa Tel: +27-11-658-8100		

The release date varies depending on the product and your region. For details, please contact your local sales office.

MITSUBISHI ELECTRIC CORPORATION

HEAD OFFICE: TOKYO BLDG., 2-7-3, MARUNOUCHI, CHIYODA-KU, TOKYO 100-8310, JAPAN
 NAGOYA WORKS: 1-14, YADA-MINAMI 5, HIGASHI-KU, NAGOYA, JAPAN